



**Water Monitoring Result at M5B - Central Cooling Water Intake Group
Mid-Flood Tide**

Date	Time	Weather Condition	Sampling Depth	m	Water Temperature			pH			Salinity			DO Saturation			DO			Turbidity			Suspended Solids		
					°C			-			ppt			%			mg/L			NTU			mg/L		
					Value	Average		Value	Average		Value	Average		Value	Average		Value	Average		Value	Average		Value	Average	
3/6/17	2:27	Cloudy	Middle	3.0	28.70	28.70	28.70	8.02	8.02	8.04	27.92	27.92	27.93	74.9	75.0	75.0	4.88	4.89	4.89	1.23	1.30	1.24	<2	3.00	
	2:28		Middle	3.0	28.70	28.70		8.05	8.05		27.93	27.93		75.2	75.0		4.91	4.89		1.19	1.24		3		
5/6/17	16:15	Fine	Middle	4.0	29.60	29.60	29.65	8.23	8.23	8.25	27.60	27.60	27.60	93.9	93.8	94.0	6.13	6.13	6.14	5.78	5.80	5.73	3	3.00	
	16:17		Middle	4.0	29.70	29.70		8.27	8.27		27.59	27.59		94.1	94.1		6.15	6.14		5.66	5.67		3		
7/6/17	16:35	Fine	Middle	3.5	29.90	29.80	30.03	8.33	8.33	8.36	28.14	28.13	28.14	94.4	94.5	94.1	6.11	6.12	6.09	5.72	5.73	5.74	5	5.00	
	16:37		Middle	3.5	30.20	30.20		8.38	8.38		28.15	28.15		93.9	93.7		6.07	6.05		5.75	5.75		5		
9/6/17	19:51	Cloudy	Middle	3.0	28.50	28.50	28.50	8.39	8.39	8.40	29.47	29.47	29.47	78.3	79.9	79.2	5.17	5.28	5.23	2.13	2.10	2.14	5	4.50	
	19:52		Middle	3.0	28.50	28.50		8.40	8.40		29.47	29.47		79.3	79.4		5.23	5.24		2.15	2.17		4		
12/6/17	5:35	Cloudy	Middle	3.5	28.20	28.20	28.20	8.22	8.22	8.24	28.31	28.31	28.31	79.2	79.5	78.9	5.28	5.30	5.26	1.59	1.52	1.52	3	3.00	
	5:36		Middle	3.5	28.20	28.20		8.25	8.25		28.30	28.31		78.6	78.3		5.24	5.22		1.50	1.48		3		
14/6/17	7:35	Cloudy	Middle	3.5	27.60	27.60	27.60	8.04	8.04	8.05	26.93	26.93	26.93	87.6	87.2	87.4	5.94	5.91	5.92	4.84	4.82	4.82	8	7.50	
	7:37		Middle	3.5	27.60	27.60		8.06	8.06		26.93	26.93		87.3	87.3		5.92	5.92		4.82	4.81		7		
16/6/17	8:35	Cloudy	Middle	3.5	27.80	27.80	27.80	7.99	7.99	7.99	25.86	25.86	25.86	87.7	87.9	87.7	5.96	5.97	5.96	5.63	5.66	5.67	6	5.00	
	8:37		Middle	3.5	27.80	27.80		7.99	7.99		25.86	25.86		87.8	87.2		5.97	5.93		5.68	5.69		4		
19/6/17	13:35	Cloudy	Middle	3.5	27.70	27.70	27.65	7.82	7.82	7.85	27.34	27.34	27.47	86.2	87.1	87.1	5.84	5.90	5.89	3.74	3.72	3.82	4	3.50	
	13:37		Middle	3.5	27.60	27.60		7.88	7.88		27.59	27.59		87.2	87.7		5.90	5.93		3.86	3.96		3		
21/6/17	15:30	Cloudy	Middle	3.5	26.70	26.70	26.70	7.86	7.86	7.87	26.53	26.53	26.56	86.6	86.6	86.6	5.97	5.97	5.97	4.34	4.44	4.42	5	5.00	
	15:32		Middle	3.5	26.70	26.70		7.88	7.88		26.58	26.58		86.6	86.4		5.97	5.96		4.44	4.44		5		
23/6/17	20:03	Cloudy	Middle	3.0	28.10	28.10	28.10	7.76	7.76	7.79	29.62	29.62	29.63	77.3	79.2	78.1	5.04	5.17	5.10	6.31	6.55	6.45	8	8.00	
	20:04		Middle	3.0	28.10	28.10		7.81	7.81		29.63	29.63		78.3	77.6		5.11	5.06		6.51	6.42		8		
26/6/17	5:20	Cloudy	Middle	3.5	28.10	28.10	28.10	7.73	7.73	7.73	26.08	26.08	26.08	77.5	79.4	78.5	5.24	5.37	5.31	4.64	4.45	4.48	2	2.00	
	5:21		Middle	3.5	28.10	28.10		7.73	7.73		26.08	26.08		78.8	78.1		5.32	5.30		4.42	4.40		<2		
28/6/17	-	-	Middle	-	-	-	-	-	-	-	-	-	-	-	-	-	-	-	-	-	-	-	-	-	
	-		Middle	-	-	-		-	-		-	-		-	-		-	-		-	-		-		-
30/6/17	-	-	Middle	-	-	-	-	-	-	-	-	-	-	-	-	-	-	-	-	-	-	-	-	-	
	-		Middle	-	-	-		-	-		-	-		-	-		-	-		-	-		-		-

Remarks:

Single underline denotes exceedance over Action Level.

Double underline denotes exceedance over Limit Level.

The water quality monitoring events on 28 and 30 June 2017 during both flood and ebb tide were temporary suspended due to the suspension of construction works



**Water Monitoring Result at Culvert J - Reference Station
Mid-Flood Tide**

Date	Time	Weather Condition	Sampling Depth m	Water Temperature °C			pH			Salinity ppt			DO Saturation %		DO mg/L		Turbidity NTU		Suspended Solids mg/L					
				Value	Average		Value	Average		Value	Average		Value	Average	Value	Average	Value	Average	Value	Average				
3/6/17	2:39	Cloudy	Middle	2.5	28.70	28.70	28.70	8.03	8.03	8.03	23.14	23.14	23.14	35.2	36.2	36.1	2.35	2.42	2.41	1.01	1.04	1.04	6	6.00
	2:40		Middle	2.5	28.70	28.70		8.03	8.03		23.14	23.14		36.4	36.5		2.44	2.44		1.03	1.06		6	
5/6/17	16:10	Fine	Middle	4.0	29.50	29.50	29.60	8.19	8.19	8.21	26.88	26.88	26.88	99.7	99.8	99.6	6.53	6.54	6.53	5.80	5.90	5.90	3	3.00
	16:12		Middle	4.0	29.70	29.70		8.22	8.22		26.87	26.87		99.3	99.5		6.51	6.52		5.91	5.99		3	
7/6/17	16:30	Fine	Middle	3.5	30.20	30.20	30.45	8.22	8.22	8.27	26.80	26.80	26.84	105.0	105.3	104.9	6.79	6.81	6.78	6.82	6.60	6.68	8	7.00
	16:32		Middle	3.5	30.70	30.70		8.31	8.31		26.88	26.88		104.7	104.7		6.77	6.74		6.66	6.65		6	
9/6/17	20:00	Cloudy	Middle	2.5	28.20	28.20	28.20	8.42	8.42	8.38	25.16	25.16	25.17	71.2	71.9	71.2	4.83	4.86	4.83	15.81	15.87	15.53	6	6.00
	20:01		Middle	2.5	28.20	28.20		8.34	8.34		25.17	25.17		71.1	70.6		4.82	4.79		15.23	15.19		6	
12/6/17	5:43	Cloudy	Middle	3.0	28.20	28.20	28.20	8.30	8.30	8.30	25.80	25.80	25.80	72.7	73.2	72.8	4.91	4.95	4.92	1.82	1.87	1.87	4	4.00
	5:44		Middle	3.0	28.20	28.20		8.28	8.30		25.80	25.80		73.2	72.2		4.95	4.88		1.89	1.90		4	
14/6/17	7:30	Cloudy	Middle	3.5	27.60	27.60	27.60	8.06	8.06	8.06	24.56	24.56	24.56	81.0	80.8	80.6	5.56	5.55	5.53	5.69	5.69	5.68	6	5.50
	7:32		Middle	3.5	27.60	27.60		8.06	8.06		24.56	24.56		80.4	80.1		5.52	5.50		5.67	5.66		5	
16/6/17	8:30	Cloudy	Middle	3.5	27.80	27.80	27.85	7.98	7.98	7.99	24.73	24.73	24.73	82.2	81.6	81.2	5.62	5.58	5.56	6.11	6.08	6.07	4	4.50
	8:32		Middle	3.5	27.90	27.90		8.00	8.00		24.73	24.73		80.8	80.3		5.53	5.49		6.05	6.03		5	
19/6/17	13:30	Cloudy	Middle	3.5	27.60	27.60	27.65	7.88	7.88	7.89	23.04	23.04	23.02	75.1	74.9	74.8	5.20	5.19	5.18	6.86	6.70	6.72	3	3.00
	13:32		Middle	3.5	27.70	27.70		7.89	7.89		23.00	23.00		74.6	74.4		5.17	5.15		6.65	6.68		3	
21/6/17	15:25	Cloudy	Middle	3.5	26.60	26.60	26.65	7.85	7.85	7.86	25.33	25.33	25.33	78.3	78.2	78.0	5.45	5.44	5.43	6.57	6.54	6.54	4	4.00
	15:27		Middle	3.5	26.70	26.70		7.87	7.87		25.32	25.32		78.0	77.6		5.43	5.39		6.53	6.53		4	
23/6/17	20:10	Cloudy	Middle	2.5	28.10	28.10	28.10	7.73	7.73	7.74	25.03	25.03	25.03	49.0	50.3	50.4	3.30	3.36	3.38	1.03	1.06	1.09	7	7.50
	20:11		Middle	2.5	28.10	28.10		7.75	7.75		25.03	25.03		50.8	51.3		3.40	3.44		1.10	1.16		8	
26/6/17	5:28	Cloudy	Middle	3.0	27.90	27.90	27.90	7.79	7.79	7.79	22.94	22.94	22.93	78.3	79.2	79.0	5.41	5.47	5.46	3.22	3.20	3.17	2	2.00
	5:29		Middle	3.0	27.90	27.90		7.78	7.78		22.94	22.91		79.4	79.1		5.49	5.47		3.15	3.12		2	
28/6/17	-	-	Middle	-	-	-	-	-	-	-	-	-	-	-	-	-	-	-	-	-	-	-	-	-
	-		Middle	-	-	-		-	-		-	-		-	-		-	-		-	-		-	
30/6/17	-	-	Middle	-	-	-	-	-	-	-	-	-	-	-	-	-	-	-	-	-	-	-	-	-
	-		Middle	-	-	-		-	-		-	-		-	-		-	-		-	-		-	

Remarks:
The water quality monitoring events on 28 and 30 June 2017 during both flood and ebb tide were temporary suspended due to the suspension of construction works



**Water Monitoring Result at M5B - Central Colling Water Intake Group
Mid-Ebb Tide**

Date	Time	Weather Condition	Sampling Depth		Water Temperature			pH			Salinity		DO Saturation		DO		Turbidity		Suspended Solids					
					°C			-			ppt		%		mg/L		NTU		mg/L					
					Value	Average		Value	Average		Value	Average	Value	Average	Value	Average	Value	Average	Value	Average				
2/6/17	21:15	Cloudy	Middle	3.0	28.30	28.30	28.30	8.19	8.19	8.19	27.63	27.63	27.64	77.8	77.3	77.0	5.19	5.16	5.14	1.29	1.27	1.24	9	6.00
	21:16		Middle	3.0	28.30	28.30		8.18	8.18		27.64	27.64		76.0	76.8		5.08	5.13		1.26	1.14		3	
5/6/17	10:00	Fine	Middle	3.0	28.80	28.80	28.90	8.16	8.16	8.17	28.26	28.26	28.26	92.8	93.7	93.3	6.12	6.18	6.15	4.76	4.84	4.86	<2	<2
	10:02		Middle	3.0	29.00	29.00		8.18	8.18		28.26	28.26		93.4	93.4		6.15	6.15		4.89	4.95		<2	
7/6/17	9:55	Fine	Middle	2.5	29.40	29.40	29.45	8.31	8.31	8.33	28.73	28.73	28.73	91.0	91.1	91.2	5.92	5.93	5.93	4.46	4.44	4.44	4	3.50
	9:57		Middle	2.5	29.50	29.50		8.34	8.34		28.72	28.72		91.7	90.8		5.97	5.91		4.44	4.43		3	
9/6/17	12:35	Fine	Middle	3.5	29.00	29.00	29.10	8.21	8.21	8.26	28.95	28.95	28.96	94.3	93.8	94.1	6.16	6.13	6.15	4.65	4.80	4.75	3	3.00
	12:37		Middle	3.5	29.20	29.20		8.31	8.31		28.96	28.96		94.2	94.1		6.16	6.16		4.76	4.77		3	
12/6/17	-	Typhoon Signal No. 3	Middle	-	-	-	-	-	-	-	-	-	-	-	-	-	-	-	-	-	-	-	-	-
	-		Middle	-	-	-		-	-		-	-		-	-		-	-		-	-		-	
14/6/17	14:30	Cloudy	Middle	3.5	28.00	28.00	28.00	8.04	8.04	8.05	26.47	26.47	26.47	89.6	89.4	89.3	6.05	6.04	6.03	7.00	7.05	7.02	7	6.50
	14:32		Middle	3.5	28.00	28.00		8.06	8.06		26.47	26.47		89.3	88.7		6.03	5.99		7.02	7.00		6	
16/6/17	17:15	Cloudy	Middle	3.5	28.20	28.20	28.20	7.90	7.90	7.92	25.31	25.31	25.36	88.0	88.3	88.2	5.97	5.98	5.98	4.66	4.68	4.72	3	3.50
	17:17		Middle	3.5	28.20	28.20		7.94	7.94		25.40	25.40		88.4	88.2		5.99	5.97		4.70	4.85		4	
19/6/17	8:50	Cloudy	Middle	3.5	25.60	25.60	26.25	7.85	7.85	7.86	26.59	26.59	26.59	87.0	86.8	86.5	5.98	5.97	5.95	4.03	4.00	3.98	3	4.00
	8:52		Middle	3.5	26.90	26.90		7.87	7.87		26.59	26.59		85.9	86.3		5.90	5.94		3.94	3.95		5	
21/6/17	9:05	Cloudy	Middle	3.5	26.50	26.50	26.50	7.84	7.84	7.86	26.44	26.44	26.44	88.0	88.1	88.0	6.10	6.11	6.09	3.36	3.33	3.33	3	3.00
	9:07		Middle	3.5	26.50	26.50		7.87	7.87		26.43	26.43		88.0	87.7		6.10	6.06		3.32	3.32		3	
23/6/17	10:05	Fine	Middle	3.5	27.80	27.80	27.90	7.88	7.88	7.88	26.82	26.82	26.81	88.3	88.0	88.0	5.94	5.93	5.93	4.41	4.24	4.28	4	5.00
	10:07		Middle	3.5	28.00	28.00		7.88	7.88		26.79	26.79		87.8	87.7		5.92	5.91		4.24	4.23		6	
26/6/17	14:12	Fine	Middle	3.5	27.80	27.80	28.00	8.08	8.08	8.09	26.35	26.35	26.31	74.8	73.4	73.4	5.06	4.96	4.96	4.46	4.45	4.42	4	4.00
	14:14		Middle	3.5	28.20	28.20		8.10	8.10		26.32	26.20		72.6	72.6		4.91	4.91		4.34	4.44		4	
28/6/17	-	-	Middle	-	-	-	-	-	-	-	-	-	-	-	-	-	-	-	-	-	-	-	-	-
	-		Middle	-	-	-		-	-		-	-		-	-		-	-		-	-		-	
30/6/17	-	-	Middle	-	-	-	-	-	-	-	-	-	-	-	-	-	-	-	-	-	-	-	-	-
	-		Middle	-	-	-		-	-		-	-		-	-		-	-		-	-		-	

Remarks:
 Single underline denotes exceedance over Action Level.
 Double underline denotes exceedance over Limit Level.
 The water quality monitoring events on 12 June 2017 during ebb tide was cancelled due to the hoisting of Strong Wind Signal No.3
 The water quality monitoring events on 28 and 30 June 2017 during both flood and ebb tide were temporary suspended due to the suspension of construction works



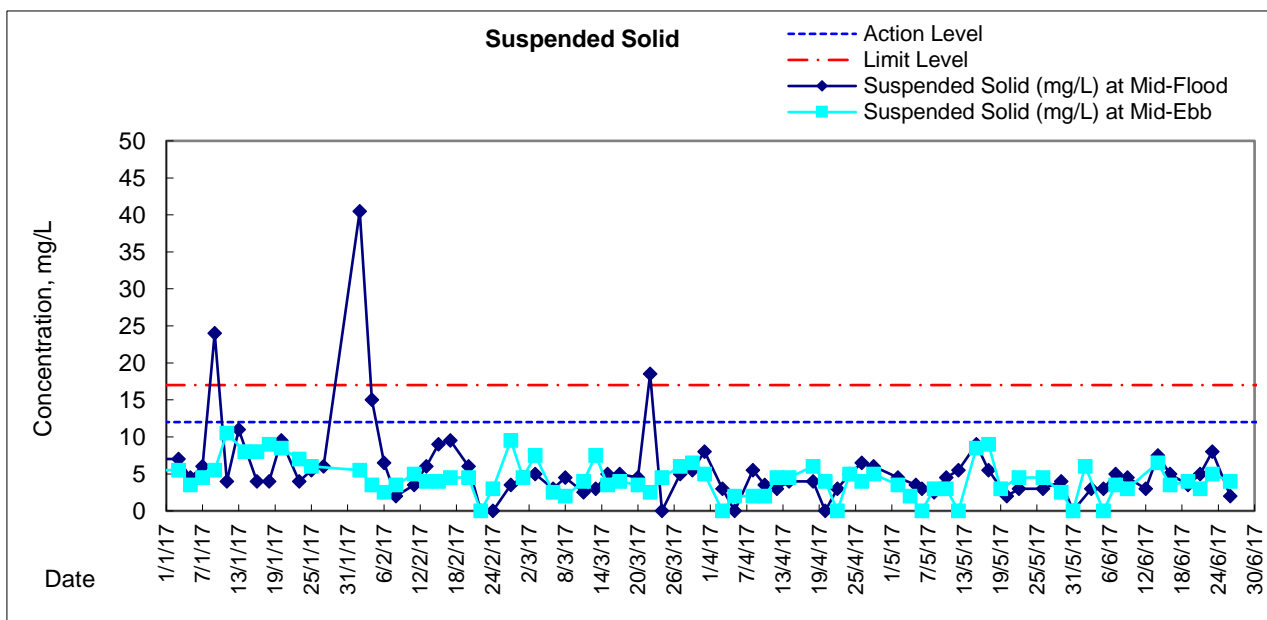
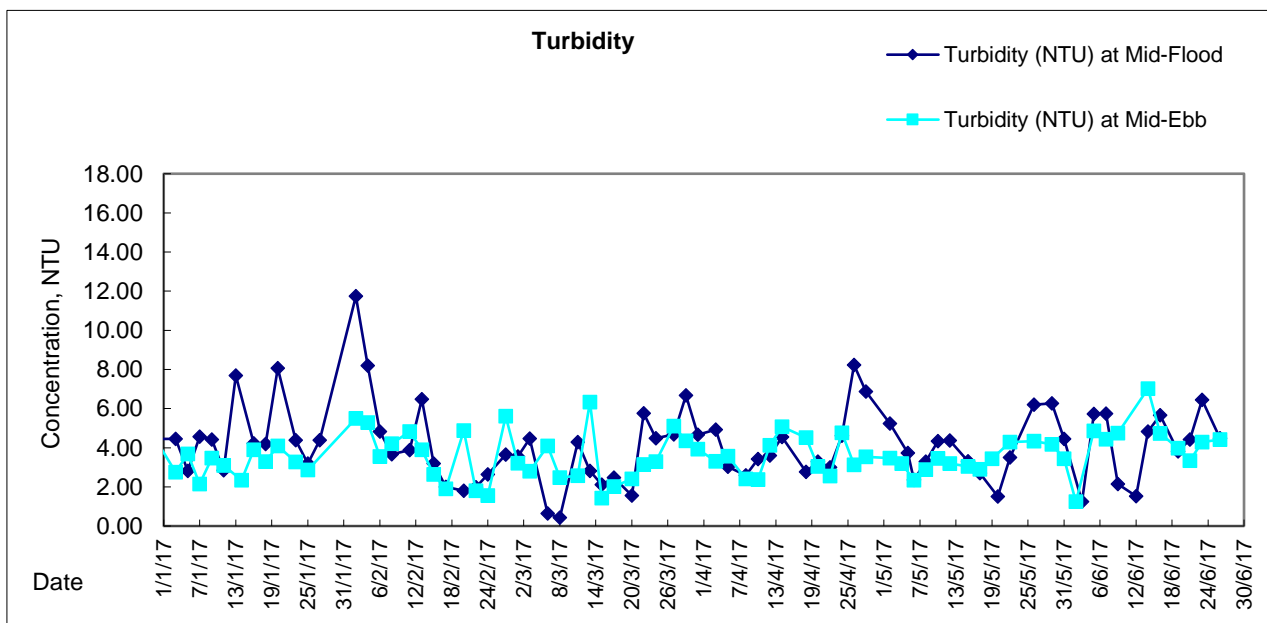
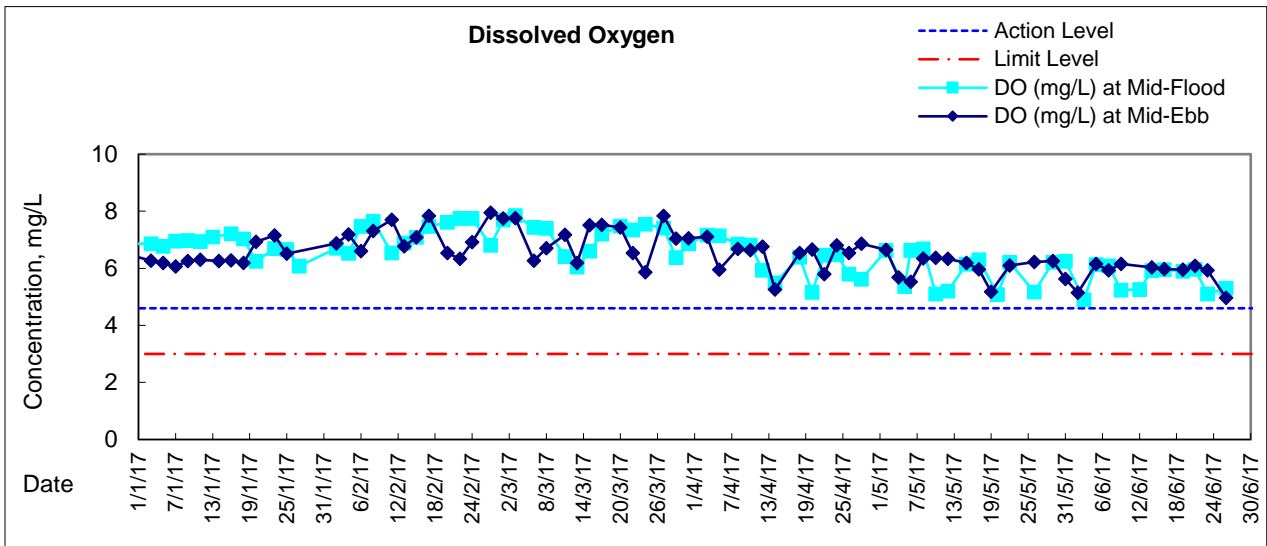
**Water Monitoring Result at Culvert J - Reference Station
Mid-Ebb Tide**

Date	Time	Weather Condition	Sampling Depth		Water Temperature			pH			Salinity		DO Saturation		DO		Turbidity		Suspended Solids					
					°C		-		ppt		%		mg/L		NTU		mg/L							
					Value	Average	Value	Average	Value	Average	Value	Average	Value	Average	Value	Average	Value	Average	Value	Average				
2/6/17	21:26	Cloudy	Middle	3	28.00	28.00	28.00	8.19	8.19	8.15	21.30	21.30	21.30	61.4	62.1	61.6	4.27	4.32	4.28	16.43	16.56	16.79	9	9.00
	21:27		Middle	3	28.00	28.00		8.11	8.11		21.30	21.28		61.0	61.7		4.24	4.28		17.17	17.01		9	
5/6/17	9:55	Fine	Middle	3	29.10	29.10	29.25	8.11	8.11	8.13	27.64	27.64	27.64	96.2	96.5	95.8	6.32	6.34	6.29	5.18	5.10	5.17	<2	<2
	9:57		Middle	3	29.40	29.40		8.14	8.14		27.64	27.64		95.7	94.7		6.28	6.21		5.12	5.28		<2	
7/6/17	9:50	Fine	Middle	4	29.60	29.60	29.65	8.21	8.21	8.25	28.51	28.51	28.51	97.4	97.8	97.5	6.33	6.35	6.33	5.06	5.06	5.06	5	4.50
	9:52		Middle	4	29.70	29.70		8.29	8.29		28.51	28.51		97.5	97.3		6.33	6.32		5.06	5.07		4	
9/6/17	12:30	Fine	Middle	4	29.90	29.90	29.90	8.20	8.20	8.21	26.27	26.27	26.28	94.2	93.6	93.1	6.19	6.15	6.13	7.70	7.74	7.70	7	6.50
	12:32		Middle	4	29.90	29.90		8.21	8.21		26.28	26.28		92.5	92.1		6.07	6.09		7.70	7.67		6	
12/6/17	-	Typhoon Signal No. 3	Middle	-	-	-	-	-	-	-	-	-	-	-	-	-	-	-	-	-	-	-	-	-
	-		Middle	-	-	-		-	-		-	-		-	-		-	-		-	-		-	
14/6/17	14:25	Cloudy	Middle	4	28.00	28.00	28.05	8.04	8.04	8.05	24.73	24.73	24.74	84.7	85.0	84.8	5.77	5.79	5.78	6.93	6.77	6.75	5	4.50
	14:27		Middle	4	28.10	28.10		8.05	8.05		24.76	24.73		85.4	84.0		5.82	5.72		6.64	6.64		4	
16/6/17	17:10	Cloudy	Middle	4	28.20	28.20	28.25	7.94	7.94	7.94	23.17	23.17	23.17	84.1	83.8	83.7	5.76	5.74	5.73	6.87	6.88	6.91	5	4.50
	17:12		Middle	4	28.30	28.30		7.93	7.93		23.17	23.17		83.5	83.4		5.72	5.71		6.93	6.94		4	
19/6/17	8:45	Cloudy	Middle	4	26.60	26.60	26.60	7.97	7.97	7.98	20.56	20.56	20.56	78.8	78.2	78.0	5.64	5.60	5.58	7.29	7.18	7.15	3	2.50
	8:47		Middle	4	26.60	26.60		7.98	7.98		20.56	20.56		77.9	77.2		5.57	5.52		7.06	7.05		2	
21/6/17	9:00	Cloudy	Middle	4	26.40	26.40	26.45	7.93	7.93	7.93	21.10	21.10	21.10	72.5	77.3	75.9	5.53	5.52	5.51	6.93	6.94	6.95	5	6.00
	9:02		Middle	4	26.50	26.50		7.93	7.93		21.10	21.10		77.0	76.8		5.49	5.48		6.96	6.96		7	
23/6/17	10:00	Fine	Middle	4	28.90	28.90	29.05	7.84	7.84	7.85	26.83	26.83	26.83	88.1	88.3	87.9	5.83	5.84	5.82	4.44	4.34	4.40	3	3.50
	10:02		Middle	4	29.20	29.20		7.86	7.86		26.82	26.82		88.0	87.3		5.82	5.78		4.43	4.39		4	
26/6/17	14:08	Fine	Middle	4	28.80	28.80	28.85	8.10	8.10	8.10	26.19	26.19	26.20	81.3	82.1	81.4	5.43	5.48	5.43	4.34	4.34	4.39	4	5.00
	14:10		Middle	4	28.90	28.90		8.10	8.10		26.20	26.20		81.4	80.8		5.43	5.39		4.44	4.45		6	
28/6/17	-	-	Middle	-	-	-	-	-	-	-	-	-	-	-	-	-	-	-	-	-	-	-	-	-
	-		Middle	-	-	-		-	-		-	-		-	-		-	-		-	-		-	
30/6/17	-	-	Middle	-	-	-	-	-	-	-	-	-	-	-	-	-	-	-	-	-	-	-	-	-
	-		Middle	-	-	-		-	-		-	-		-	-		-	-		-	-		-	

Remarks:
 The water quality monitoring events on 12 June 2017 during ebb tide was cancelled due to the hoisting of Strong Wind Signal No.3
 The water quality monitoring events on 28 and 30 June 2017 during both flood and ebb tide were temporary suspended due to the suspension of construction works



Graphic Presentation of Water Quality Result of M5B - Central Cooling Water Intake Groups





Graphic Presentation of Water Quality Result of Culvert J - Reference Station

